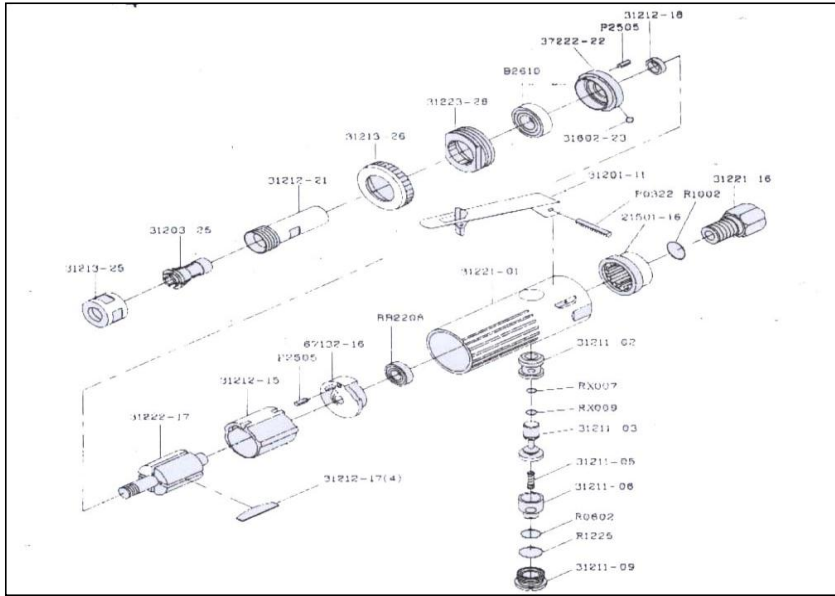


## APT702 - Die Grinder



Ref. #	PCL Part No	Description
21501-16	NOT AVAILABLE	Black exhaust plastic cover (large)
2	NOT AVAILABLE	Safety trigger
3	APS702/CLT	6mm Collet
3	APS702/CLT3	3mm Collet
4	NOT AVAILABLE	Copper Bushing
5	NOT AVAILABLE	Stem (Safety)
6	NOT AVAILABLE	Spring
7	NOT AVAILABLE	Adjustable device (large)
8	NOT AVAILABLE	Sealing plug
9	NOT AVAILABLE	Cylinder (FM-1388)
10	NOT AVAILABLE	Leaves
11	NOT AVAILABLE	Washer
12	NOT AVAILABLE	Clip spindle
13	APS702/CNT	Collet Nut
14	NOT AVAILABLE	Black plastic front cover (large)
15	NOT AVAILABLE	Aluminum Handle
16	NOT AVAILABLE	Air inlet (18 oblique teeth)
17	NOT AVAILABLE	Rotor (four channels)
18	NOT AVAILABLE	Locking Ring
19	NOT AVAILABLE	2.5 ball
20	NOT AVAILABLE	Front panel
21	NOT AVAILABLE	Back plate
22	NOT AVAILABLE	608zz bearing
23	NOT AVAILABLE	6000zz bearing
24	NOT AVAILABLE	3 * 22 spring pin
25	NOT AVAILABLE	2.5 * 5 spring pin
26	NOT AVAILABLE	6 * 2 oil rings
27	NOT AVAILABLE	10 * 2 oil rings
28	NOT AVAILABLE	Oil ring 12 * 2.5
29	NOT AVAILABLE	007 oil ring
30	NOT AVAILABLE	009 oil ring
31	NOT AVAILABLE	14mm Wrench
32	NOT AVAILABLE	19mm Wrench