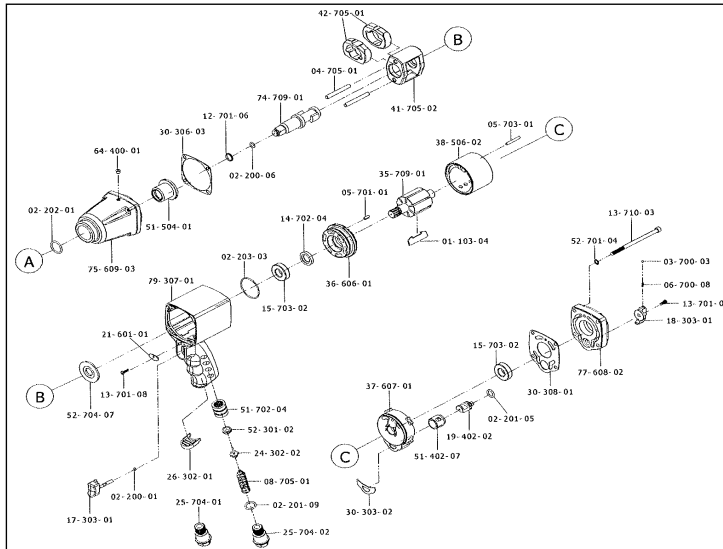


APT233 - 1/2" Composite Impact Wrench



| Ref no | PCL Part No | Description |
|--------|-----------------|---|
| 1 | APS233/RBS | ROTOR BLADES |
| 2 | SEE SERVICE KIT | O-RING (P2x1.5) |
| 3 | SEE SERVICE KIT | O-RING (P7x1.9) |
| 4 | SEE SERVICE KIT | O-RING (P11x2.4) |
| 5 | SEE SERVICE KIT | O-RING (P14x2.4) |
| 6 | SEE SERVICE KIT | O-RING (P20x2.5) |
| 7 | SEE SERVICE KIT | O-RING (P37.82x1.78) |
| 8 | NOT AVAILABLE | IRON BALL (φ3.175mm) |
| 9 | NOT AVAILABLE | PIN (φ6.3x51.5) |
| 10 | NOT AVAILABLE | PIN (φ5x10) |
| 11 | NOT AVAILABLE | PIN (φ4x30) |
| 12 | SEE SERVICE KIT | SPRING |
| 13 | SEE SERVICE KIT | SPRING |
| 14 | NOT AVAILABLE | RETAINING RING |
| 15 | NOT AVAILABLE | SCREW |
| 16 | NOT AVAILABLE | SCREW |
| 17 | NOT AVAILABLE | SCREW |
| 18 | SEE SERVICE KIT | OIL SEAL |
| 19 | SEE REPAIR KIT | BALL BEARING (6002) |
| 19-1 | NOT AVAILABLE | Ball Bearing |
| 20 | NOT AVAILABLE | SWITCH LEVER |
| 21 | NOT AVAILABLE | REVERSE VALVE |
| 22 | NOT AVAILABLE | SPEED SWITCH |
| 23 | NOT AVAILABLE | TRIGGER CAP |
| 24 | NOT AVAILABLE | VALVE ROD |
| 25 | NOT AVAILABLE | AIR INLET (18) |
| 26 | NOT AVAILABLE | AIR INLET (19) |
| 27 | APS233/MLR1 | MUFFLER |
| 27-1 | APS233/MLR2 | Muffler |
| 28 | SEE SERVICE KIT | PACKING |
| 29 | SEE SERVICE KIT | PACKING |
| 30 | SEE SERVICE KIT | PACKING |
| 31 | APS233/RTR | ROTOR |
| 32 | APS233/FPE | FRONT PLATE |
| 33 | APS233/RPE | REAR PLATE |
| 34 | NOT AVAILABLE | CYLINDER |
| 35 | APS233/HCE | HAMMER CASE |
| 36 | NOT AVAILABLE | RING |
| 37 | NOT AVAILABLE | BUSHING |
| 38 | NOT AVAILABLE | BUSHING |
| 39 | NOT AVAILABLE | BUSHING |
| 40 | SEE REPAIR KIT | WASHER |
| 41 | SEE REPAIR KIT | WASHER |
| 42 | SEE REPAIR KIT | WASHER |
| 43 | NOT AVAILABLE | OIL CUP |
| 44 | APS233/ANL | ANVIL |
| 45 | NOT AVAILABLE | FRONT CAP |
| 46 | NOT AVAILABLE | REAR CAP |
| 47 | NOT AVAILABLE | HANDLE |
| 46 | APTR233 | APT233 Repair kit (items: 1,19,40,41,42) |
| 47 | APTS233 | APT233 Service kit (items: 2,3,4,5,6,7,12,13,18,28,29,30) |