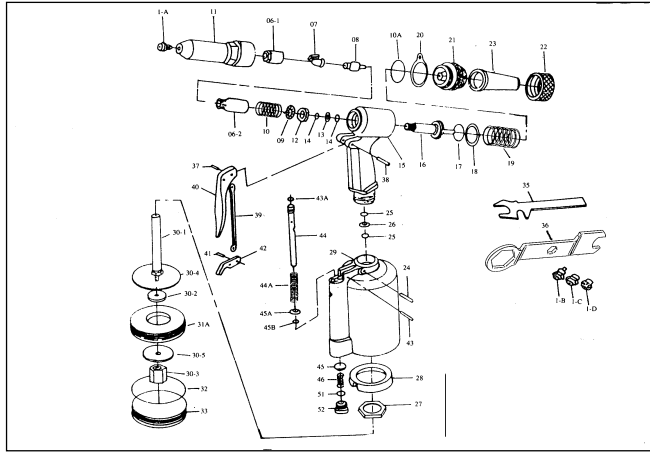


APT690 - Riveter



Ref. #	PCL Part No	Description
01-1	NOT AVAILABLE	NOSEPIECE (3/16") 4.8mm
01-2	NOT AVAILABLE	NOSEPIECE (5/32") 4.0mm
01-3	NOT AVAILABLE	NOSEPIECE (1/8") 3.2mm
01-4	NOT AVAILABLE	NOSEPIECE (3/32") 2.4mm
06-1	NOT AVAILABLE	JAW CASE FRONT TART
06-2	NOT AVAILABLE	JAW CASE END TART
7	NOT AVAILABLE	JAW
8	NOT AVAILABLE	JAW PUSHER
9	NOT AVAILABLE	CASE WASHER RING
10RK	NOT AVAILABLE	JAW PUSHER SPRING
10-1TK	NOT AVAILABLE	FRAME CAP O RING
11	NOT AVAILABLE	FRAME HEAD
12	NOT AVAILABLE	CASE LOCK NUT
13TK	NOT AVAILABLE	BACK UP RING
14TK	NOT AVAILABLE	BACK UP O RING
15	NOT AVAILABLE	FRAME
16TK	NOT AVAILABLE	OIL PISTON
17TK	NOT AVAILABLE	OIL PISTON O RING
18TK	NOT AVAILABLE	BACK UP RING
19RK	NOT AVAILABLE	RETURN SPRING
20	NOT AVAILABLE	HANGING CLIP
21	NOT AVAILABLE	FRAME CAP
22	NOT AVAILABLE	FRAME CAP NUT
23	NOT AVAILABLE	SAFETY CAP
24	NOT AVAILABLE	SETTING SEREW PIN
25TK	NOT AVAILABLE	BACK UP O RING
26	NOT AVAILABLE	BACK UP RING
27	NOT AVAILABLE	FRAME LOCK NUT
28	NOT AVAILABLE	RUBBER CUSHION
29BTK	NOT AVAILABLE	AIR CYLINDER
30-1B	NOT AVAILABLE	AIR PISTON STEM
30-2	NOT AVAILABLE	AIR PISTON AI
30-3	NOT AVAILABLE	AIR PISTON LOCK NUT
30-4	NOT AVAILABLE	BIG IRON PLATE
30-5	NOT AVAILABLE	SMALL IRON PLATE
31-1	NOT AVAILABLE	AIR PISTON O RING
32TK	NOT AVAILABLE	CYLINDER O RING
33	NOT AVAILABLE	CYLINDER CAP
35	NOT AVAILABLE	SPANNER GAUGE
36	NOT AVAILABLE	SPANNER
37	NOT AVAILABLE	TRIGGER PIN
38	NOT AVAILABLE	CONNECTOR
39	NOT AVAILABLE	TRIGGER ROD
40	NOT AVAILABLE	TRIGGER
41	NOT AVAILABLE	CONNECTOR
42	NOT AVAILABLE	TRIGGER LEVER
43	NOT AVAILABLE	LEVER PIN
43-1TK	NOT AVAILABLE	VALVE PUSHER O RING
44B	NOT AVAILABLE	VALVE PUSHER
44-1RK	NOT AVAILABLE	VALVE SPRING
45	NOT AVAILABLE	VALVE
16438	NOT AVAILABLE	VALVE COLLAR
45-2TK	NOT AVAILABLE	COLLAR O RING P5
46RK	NOT AVAILABLE	VALVE SPRING
51TK	NOT AVAILABLE	VALVE CAP O RING P11
52	NOT AVAILABLE	VALVE CAP
TK	NOT AVAILABLE	TUNE UP KIT