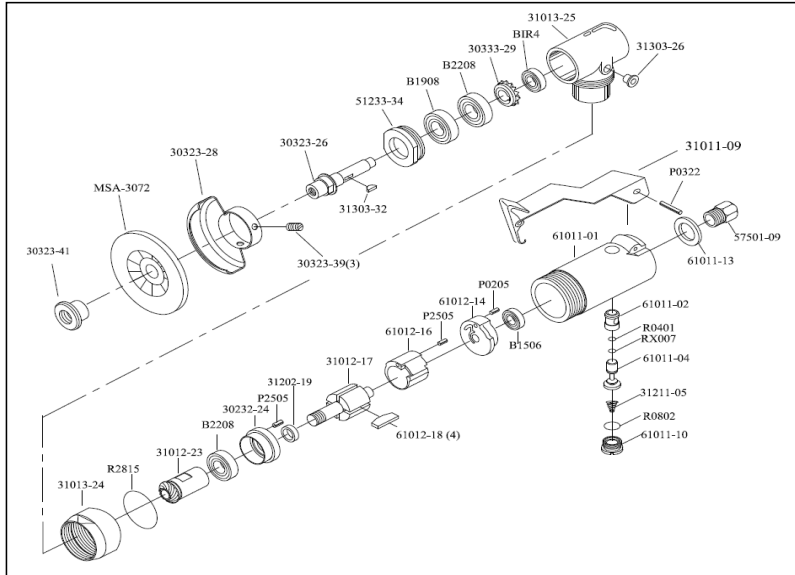


APT905 - Mini 2" Angle Grinder



Ref #	PCL Part No	Description
MSA-3072	APS905/GWL	2 "grinding wheel
30232-24	APS901/FPL	Front panel
30232-26	APS905/SDE	Spindle
30232-28	APS905/CVR	2 "cover
30232-39	APS905/SRW	Screw M4 * 3
30232-402	APS905/LSW	Grinding wheel lock screw
30333-29	APS905/BGR1	Bevel Gear (20T)
31011-09	APS902/JST	Japanese security trigger
31012-17	APS901/RTR	Rotor
31012-23	APS905/BGR2	12T Bevel Gear (Short)
31013-24	APS905/LNT	Locking nut
31013-25	APS905/EBW	Elbow
31202-19	APS905/WSR	Washer
31211-05	APS901/SNG	Spring
31303-26	APS902/ODT	Oil droplet
31303-32	APS903/WKY	Woodruff Key 9 * 2
51233-34	APS905/HSP	Heart Seal plug
57501-09	APS904/AIT	Air inlet (18 oblique teeth)
61011-01	APS903/AHE	Aluminum Handle
61011-02	APS901/CBG	Copper Bushing
61011-04	APS901/STM	Stem
61011-10	APS901/SPG	Sealing plug
61011-13	APS901/EGT	Exhaust gasket
61012-14	APS901/BPE	Back plate (FM746B)
61012-16	APS901/CDR	Cylinder
61012-18	APS901/RBS	Rotor Blades
B1506D	APS905/BRG1	696T12ZZMC3P5
BB1908	APS905/BRG2	698zz bearing
B2208D	APS905/BRG3	608ZZP6EMQSRL
BIR4D	APS905/BRG4	R4zz bearing
P0205	APS901/SPN1	2 * 5 spring pin
P0322	APS901/SPN2	3 * 22 spring pin
P2505	APS901/SPN3	2.5 * 5 spring pin
R0401	APS901/ORG1	4 * 1 oil ring
R0802	APS901/ORG2	8 * 2 oil rings
R2815	APS905/ORG1	N70 oil ring (28 * 1.5)
RX007	APS905/ORG2	007 oil ring
WO011	APS905/WNH	11mm Wrench