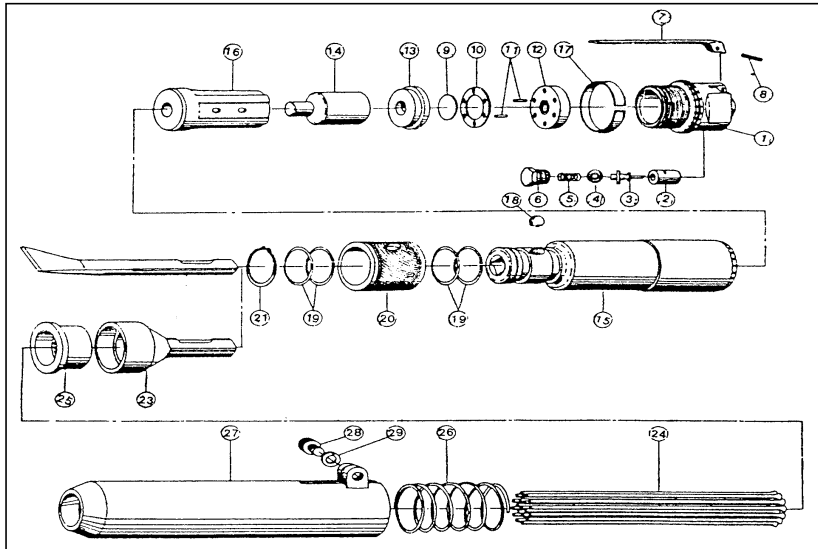


APT561 - Needle Scaler



Ref. #	PCL Part No	Description
1	NOT AVAILABLE	Cylinder Cap
2	NOT AVAILABLE	Throttle Bushing
3	NOT AVAILABLE	Throttle Rod
4	SEE SERVICE KIT	O-Ring (P4)
5	SEE SERVICE KIT	Spring
6	NOT AVAILABLE	Throttle Cap
7	NOT AVAILABLE	Throttle Lever
8	NOT AVAILABLE	Spring Roll Pin (3x22)
9	NOT AVAILABLE	Main Valve
10	NOT AVAILABLE	Main Valve Case
11	NOT AVAILABLE	Pin (2.8x11)
12	NOT AVAILABLE	Lower Main Valve
13	NOT AVAILABLE	Upper Main Valve
14	NOT AVAILABLE	Piston
15	NOT AVAILABLE	Cylinder Body
16	NOT AVAILABLE	Piston Sleeve
17	NOT AVAILABLE	Lock Ring
18	NOT AVAILABLE	Ball (SB-7/16)
19	SEE SERVICE KIT	O-Ring (P24)
20	NOT AVAILABLE	Chisel Cover
21	NOT AVAILABLE	Sanp Ring (STW30)
22	NOT AVAILABLE	Chisel -Bent
22-1	NOT AVAILABLE	Chisel -Flat 20mm
22-2	NOT AVAILABLE	Chisel -Point
23	NOT AVAILABLE	Needle Shank
24	APS561/NST	3mm 19pc Needle Set (Φ3x180mm)
25	APS561/NFE	Needle Flange
26	APS561/SNG2	Spring (38x83)
27	NOT AVAILABLE	Needle Cover
28	NOT AVAILABLE	Cap Head Screw (5/16"x1/8")
29	NOT AVAILABLE	Spring Washer
30	NOT AVAILABLE	Hex Wrench (6mm)
N/A	APTS561	APT561 Service Kit (items: 4,5,19,26)