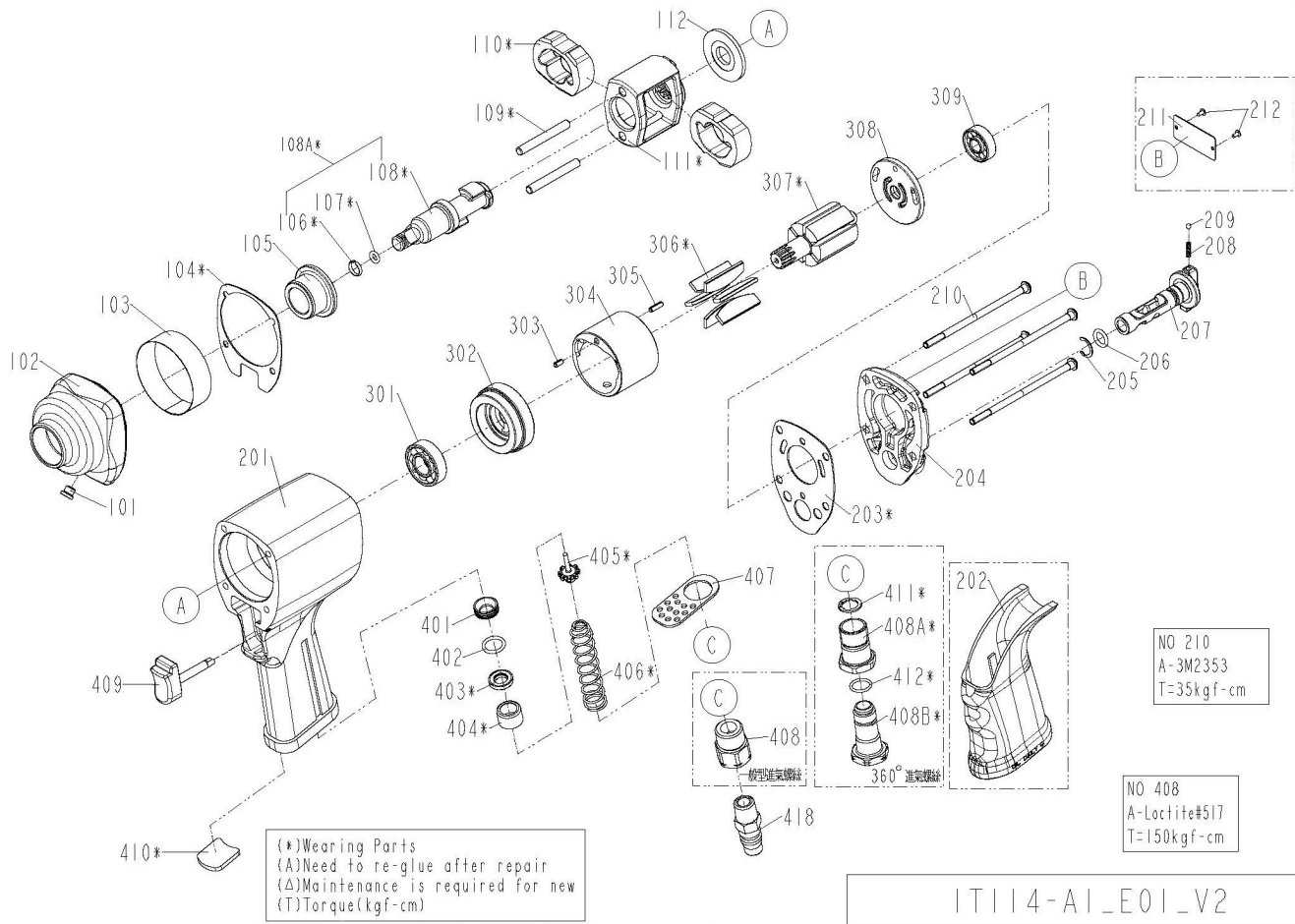


APP101 - 3/8" Impact Wrench



Ref	PCL Part No	Description	Qty
101	APS101/101	Hammer case grease fitting	1
102	APS101/102	Hammer case	1
103	APS101/103	Steel ring	1
104	APS101/HCG	Hammer case gasket	1
105	APS101/105	Hammer case bushing	1
106	APS101/106	Socket retainer	1
107	APS101/107	O-ring	1
108	APS101/108	Anvil	1
108A	APS101/108A	Anvil unit	1
109	APS101/109	Hammer frame pin	2
110	APS101/110	Hammer	2
111	APS101/111	Hammer frame	1
112	APS101/112	Washer	1
201	APS101/201	Housing	1
202	APS101/202	Handle grip	1
203	APS101/GKT	Gasket	1
204	APS101/204	Rear cover	1
205	APS101/205	CTW-ring	1
206	APS101/206	O-ring	1
207	APS101/207	Reverse valve	1
208	APS101/208	Spring	1
209	APS101/209	Steel ball	1
210	APS101/210	Half round HD star head bolt	4

Ref	PCL Part No	Description	Qty
301	APS101/301	Bearing	1
302	APS101/302	Front end plate	1
303	APS101/303	Spring pin	1
304	APS101/304	Cylinder	1
305	APS101/305	Spring pin	1
306	APS101/RBS	Rotor blades	6
307	APS101/307	Rotor	1
308	APS101/308	Rear bearing plate	1
309	APS101/309	Bearing	1
401	APS101/401	Insert bushing	1
402	APS101/402	O-ring	1
403	APS101/403	Seal	1
404	APS101/404	Bushing	1
405	APS101/405	Tip valve	1
406	APS101/406	Spring	1
407	APS101/407	Exhaust deflector	1
408A	APS101/408A	Air inlet	1
408B	APS101/408B	Air inlet	1
409	APS101/409	Trigger unit	1
410	APS101/410	Muffler	1
411	APS101/411	Ex-concentric ring	1
412	APS101/412	O-ring	1