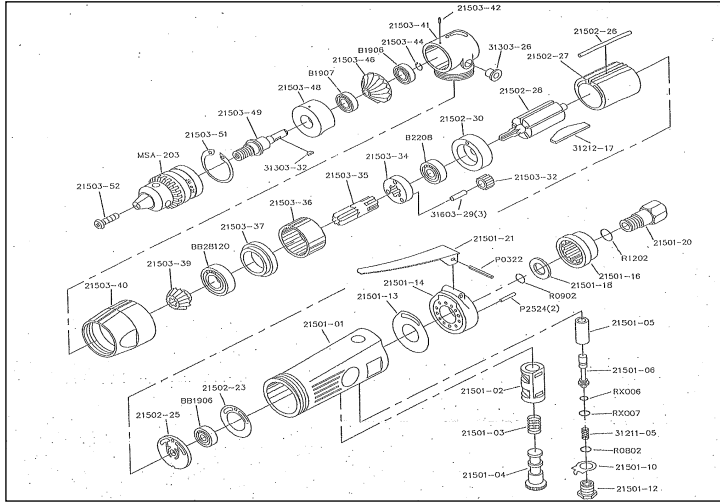


APT402 - 3/8" (10mm) Reversible Angle Drill



Ref. #	PCL Part No	Description
1	NOT AVAILABLE	Aluminum Handle
2	NOT AVAILABLE	About switch axis bush
3	NOT AVAILABLE	Conical compression spring
4	NOT AVAILABLE	About switch axis
5	NOT AVAILABLE	Copper Bushing
6	NOT AVAILABLE	Stem
7	NOT AVAILABLE	Switch-axis fixed films
8	NOT AVAILABLE	Rail closure plug
9	NOT AVAILABLE	Exhaust cover gasket
10	NOT AVAILABLE	Exhaust cover
11	NOT AVAILABLE	Black exhaust plastic cover (large)
12	NOT AVAILABLE	Intake gasket
13	NOT AVAILABLE	Air inlet (18 teeth)
14	NOT AVAILABLE	Trigger
15	NOT AVAILABLE	Motor Gasket
16	NOT AVAILABLE	Back-end version
17	NOT AVAILABLE	Fixed pin 2.5 * 55
18	NOT AVAILABLE	Cylinder (ASO-007-1) (FM686N)
19	NOT AVAILABLE	Rotor
20	NOT AVAILABLE	Front panel
21	NOT AVAILABLE	16T idler gear-4mm hole
22	NOT AVAILABLE	Idler gear housing (FM-539B)
23	NOT AVAILABLE	Gear shaft
24	NOT AVAILABLE	Gear sleeve
25	NOT AVAILABLE	Internal gear washer
26	NOT AVAILABLE	Rundlet type gear 20T
27	NOT AVAILABLE	Coupling nut
28	NOT AVAILABLE	Elbow
29	NOT AVAILABLE	SET 4 * 6 Hexagon screw
30	NOT AVAILABLE	S-6 C-type buckle
31	NOT AVAILABLE	30T Bevel Gear large
32	NOT AVAILABLE	Bearing
33	NOT AVAILABLE	Transmission shaft
34	NOT AVAILABLE	R-32 C-shaped buckle
35	NOT AVAILABLE	5 * 13 * screw tooth of left
36	NOT AVAILABLE	Spring
37	NOT AVAILABLE	Rotor Blades
38	NOT AVAILABLE	Oil droplet
39	NOT AVAILABLE	Woodruff Key 9 * 2
40	NOT AVAILABLE	Bearing pin 4 * 13.8
41	NOT AVAILABLE	626zz-NMB
42	NOT AVAILABLE	607zz bearing
43	NOT AVAILABLE	608ZZ-NMB
44	NOT AVAILABLE	Bearing
45	NOT AVAILABLE	6001 (open) bearing
46	NOT AVAILABLE	3 * 22 spring pin
47	NOT AVAILABLE	2.5 * 24 spring pin
48	NOT AVAILABLE	8 * 2 oil rings
49	NOT AVAILABLE	9 * 2 oil rings
50	NOT AVAILABLE	12 * 2 oil rings
51	NOT AVAILABLE	006 oil ring
52	NOT AVAILABLE	007 oil ring
53	NOT AVAILABLE	Wrench SK4